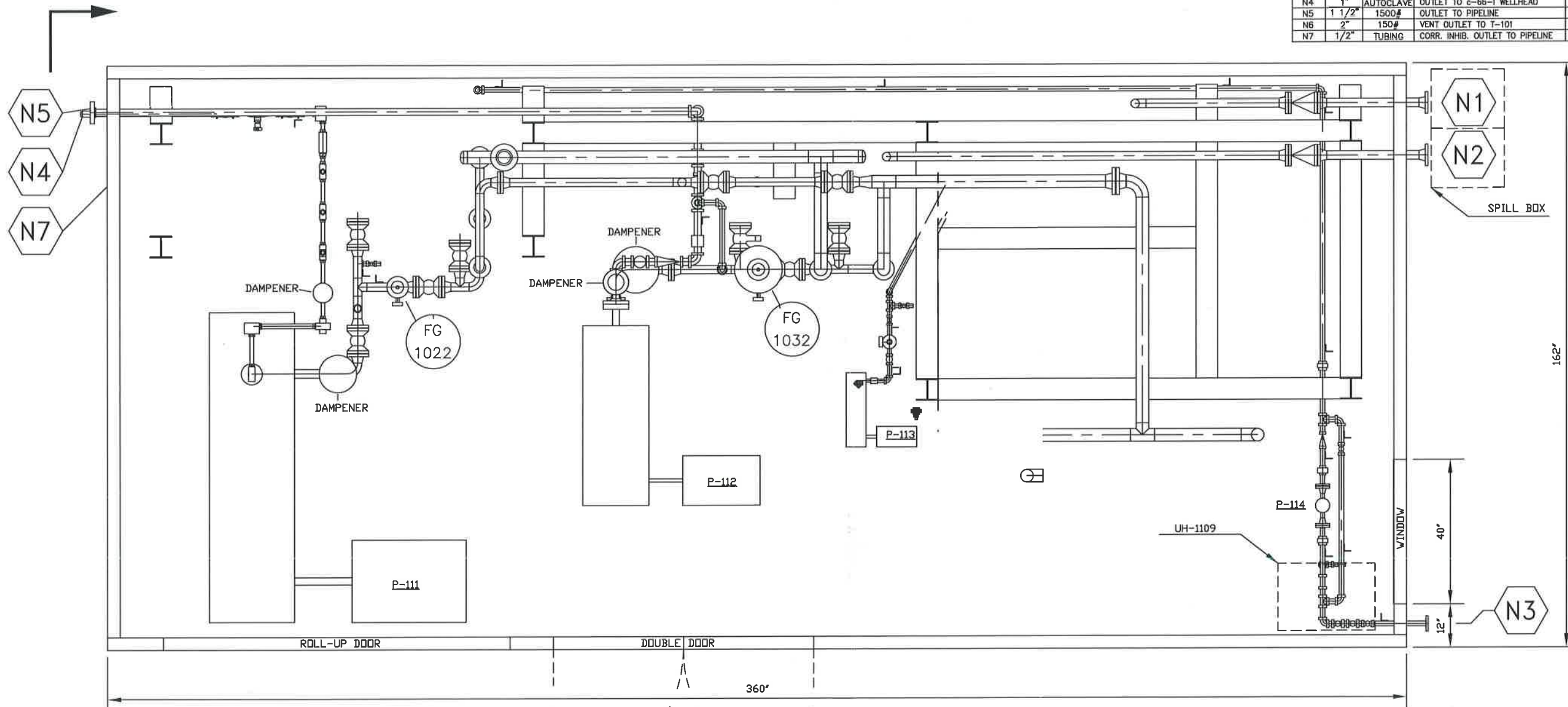


NOZZLE/CONNECTION SCHEDULE				
NOZZLE	SIZE	RATING	SERVICE	LINE NUMBER
N1	2"	150#	INLET TO T-104A/B (CRO 9815)	--
N2	2"	150#	INLET TO T-103 (CRO 9178)	--
N3	1"	150#	METHANOL INLET FROM T-101	--
N4	1"	AUTOCLAVE	OUTLET TO c-66-1 WELLHEAD	--
N5	1 1/2"	1500#	OUTLET TO PIPELINE	--
N6	2"	150#	VENT OUTLET TO T-101	--
N7	1/2"	TUBING	CORR. INHIB. OUTLET TO PIPELINE	NOT MODELED



SOLARIS MANAGEMENT CONSULTANTS INC.	
Project#	VDD#
NE12-01811	B3-001
PO#	4500180218
1	PROCEED
2	PROCEED, CHANGE AS NOTED & RESUBMIT
3	DO NOT PROCEED, CHANGE AS NOTED & RESUBMIT
4	PROCEED AND RESUBMIT CERTIFIED
10	DATA RECEIVED FOR INFORMATION ONLY
By:	Date: FEB 20, 2014

SECTION D  
SCALE 1:30

Returned FEB 26 2014 SMCI-DC  
Received T-0376 FEB 03 2014 SMCI-DC

LSD: C-66-1/94-N-9  
PROJECT: LIARD-WELLSITE M-11  
PO: 4500180218  
MATERIAL: PUMP & TANK SKID  
TAG: M11  
SHEET 2 OF 5

REV.	DATE	DESCRIPTION	DRAWN	CHECK	DESIGN	APPR.
0	24-JAN-14	ISSUED FOR CONSTRUCTION	JV	CB	JV	

ULTRAFAB INDUSTRIES LTD.	
CLIENT:	NEXEN
TITLE:	LIARD-WELLSITE M-11 PUMP & CHEMICAL TANKS GENERAL ARRANGEMENT DRAWING
SCALE:	1:30
DRAWING No. & Computer File #	LA138-003-02
DATE	TIME
FILE: Projects 2013/139-400/139-407/Drawings/LA139-407	

THIS DRAWING AND THE DESIGN IT COVERS ARE CONFIDENTIAL AND THE PROPERTY OF ULTRAFAB INDUSTRIES LTD., AND SHALL NOT BE DISCLOSED TO OTHERS OR REPRODUCED IN ANY MANNER OR USED FOR ANY PURPOSE WHATSOEVER EXCEPT BY WRITTEN CONSENT OF ULTRAFAB.