

SE ISOMETRIC LAYOUT VIEW

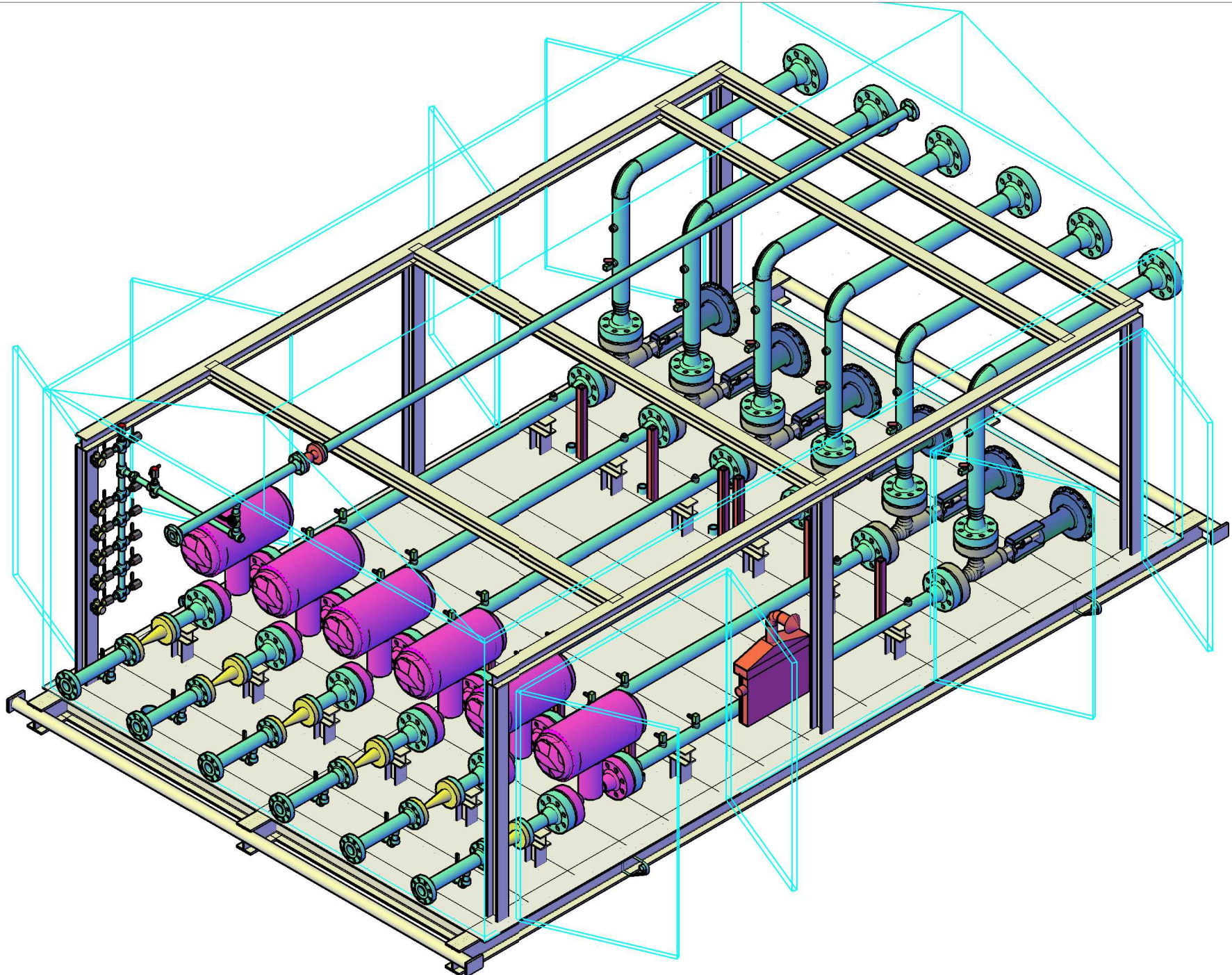
				DATE	DEC 15, 2025		
1	RE ISSUED FOR APPROVAL	SM	DEC 15, 25	DRAWN	SM	DEC 15, 25	NO
0	ISSUED FOR APPROVAL	SM	DEC 5, 25	CHECKED	SM	DEC 5, 25	NO
	REVISION		DATE	APPROVED			

NUVISTA ENERGY LTD.  
 05-28-071-09 W6M  
 6 WELL CHOKE SKID  
 STANDARD LAYOUT

**APPROVED**



TAK JDB# 11456



NE ISOMETRIC LAYOUT VIEW

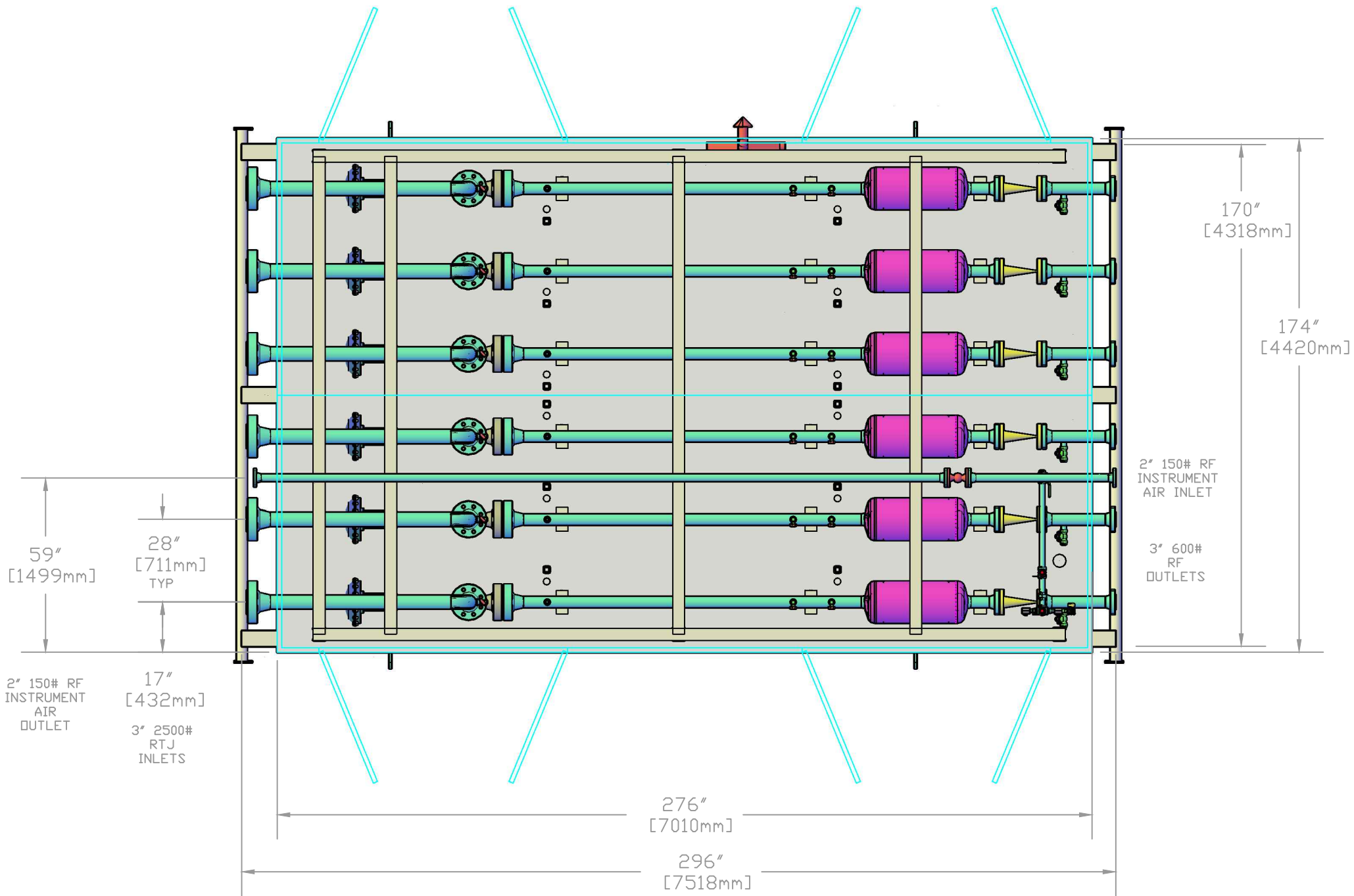
NO	REVISION	BY	DATE	APPROVED	DATE	REV
1	RE ISSUED FOR APPROVAL	SM	DEC 15, 25	DRAWN	DEC 15, 2025	1
0	ISSUED FOR APPROVAL	SM	DEC 5, 25	CHECKED		

**APPROVED**

NUVISTA ENERGY LTD.  
 05-28-071-09 W6M  
 6 WELL CHOKE SKID  
 STANDARD LAYOUT



TAK JOB# 11456



TOP LAYOUT VIEW

NO	REVISION	BY	DATE	APPROVED	DATE	REV
1	RE ISSUED FOR APPROVAL	SM	DEC 15, 25	DRAWN	DEC 15, 2025	1
0	ISSUED FOR APPROVAL	SM	DEC 5, 25	CHECKED		

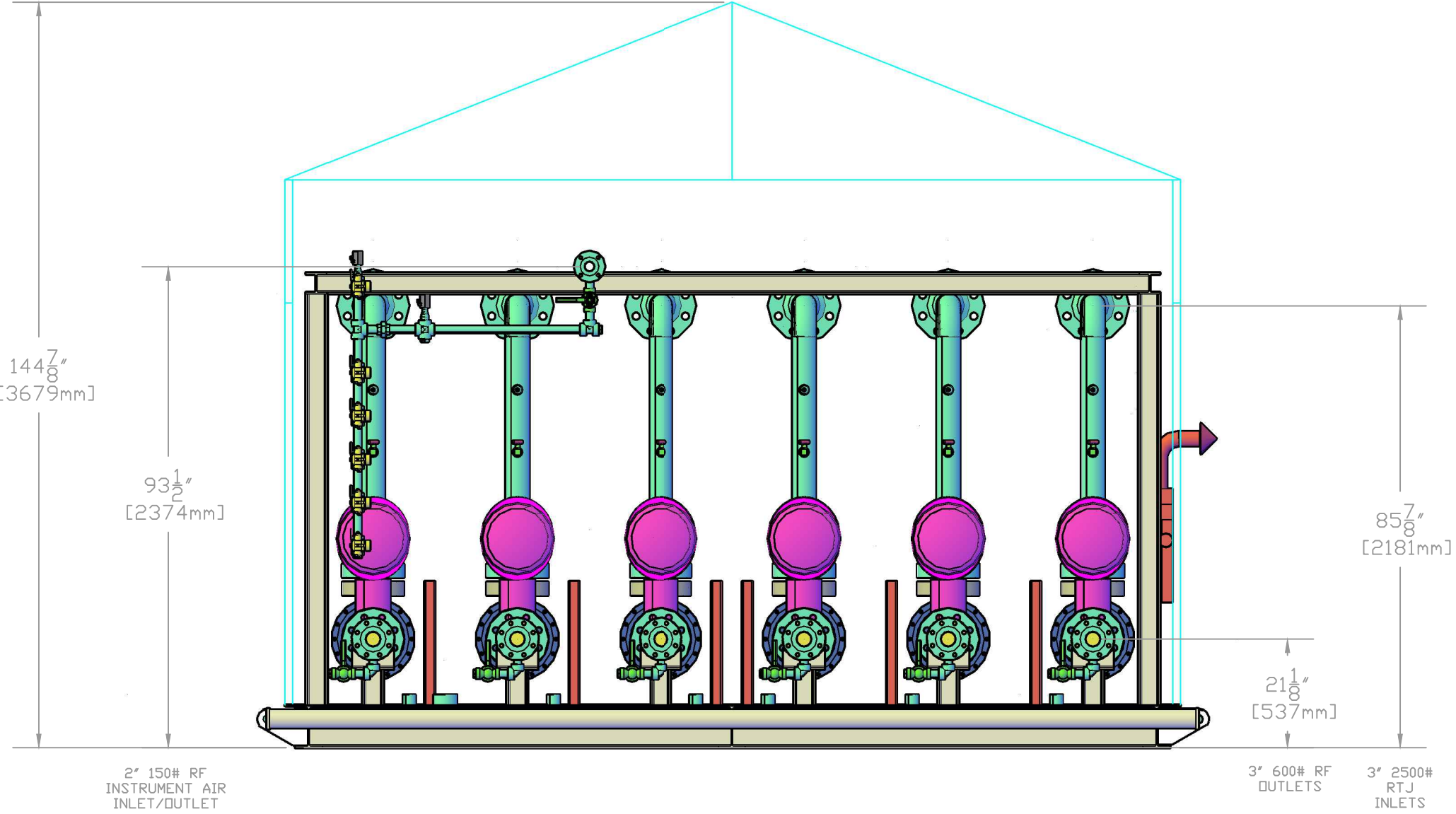
APPROVED

NUVISTA ENERGY LTD.  
 05-28-071-09 W6M  
 6 WELL CHOKE SKID  
 STANDARD LAYOUT



TAK JOB# 11456

SHIPPING HEIGHT



144 <sup>7</sup>/<sub>8</sub>"  
[3679mm]

93 <sup>1</sup>/<sub>2</sub>"  
[2374mm]

85 <sup>7</sup>/<sub>8</sub>"  
[2181mm]

21 <sup>1</sup>/<sub>8</sub>"  
[537mm]

2" 150# RF  
INSTRUMENT AIR  
INLET/OUTLET

3" 600# RF  
OUTLETS      3" 2500#  
RTJ  
INLETS

END LAYOUT VIEW

DATE DEC 15, 2025

NUVISTA ENERGY LTD.  
05-28-071-09 W6M  
6 WELL CHOKE SKID  
STANDARD LAYOUT



TAK JOB# 11456

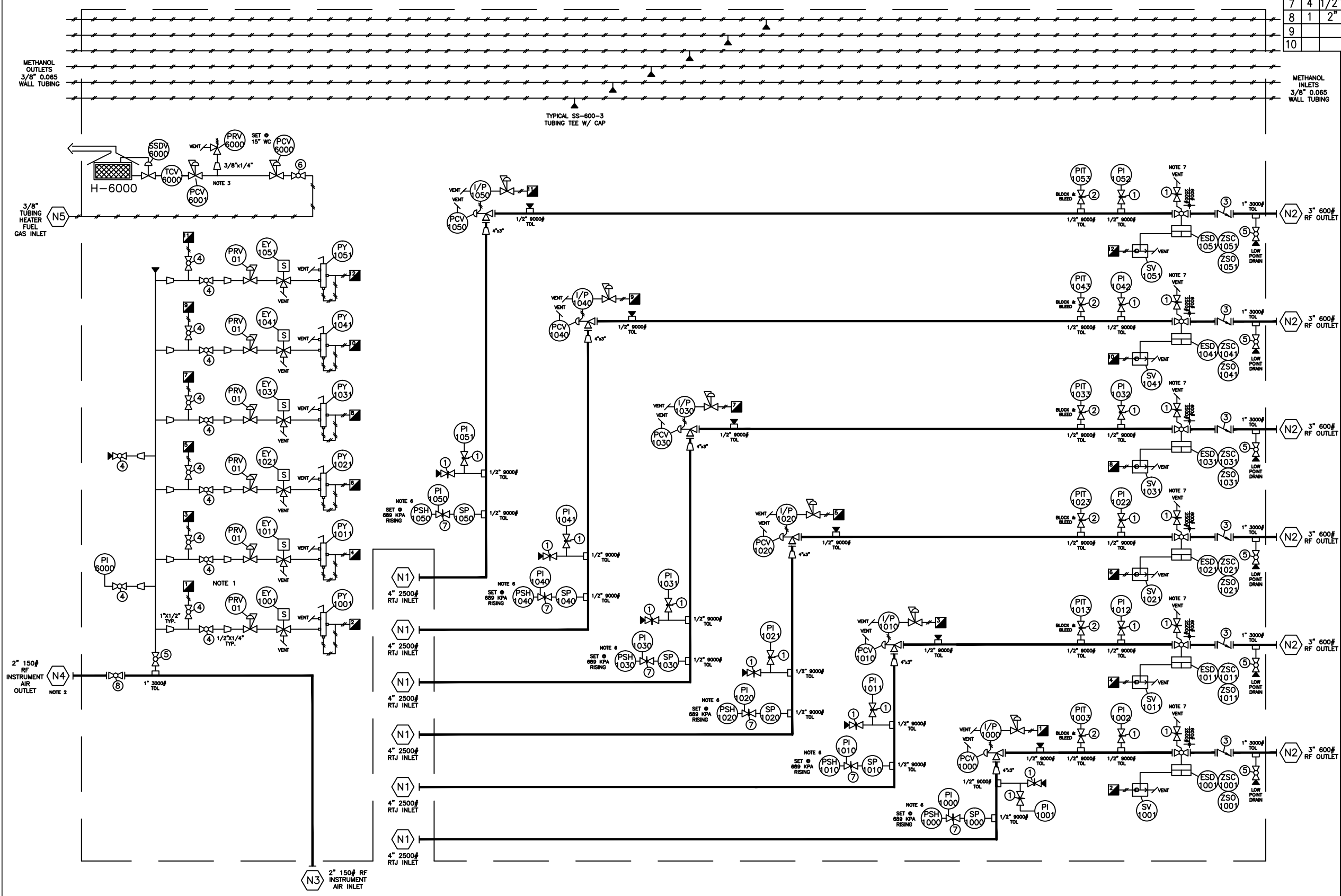
**APPROVED**

NO	REVISION	BY	DATE	APPROVED
1	RE ISSUED FOR APPROVAL	SM	DEC 15, 25	DRAW
0	ISSUED FOR APPROVAL	SM	DEC 5, 25	CHECK

H-6000  
 CCI THERMAL 24" x 24"  
 20,000 BTU/HR CATALYTIC  
 12V HEATER C/W 100% SAFETY SHUTOFF  
 25' CABLES  
 NATURAL GAS ORIFICE

LINE LIST			LINE LIST		
TAG	SIZE	DESCRIPTION	TAG	SIZE	DESCRIPTION
N1	4" 2500# RTJ	INLETS			
N2	3" 600# RF	OUTLETS			
N3	2" 150# RF	INSTRUMENT AIR INLET			
N4	2" 150# RF	INSTRUMENT AIR OUTLET			
N5	3/8" TUBING	HEATER FUEL GAS INLET			

VALVE LIST			VALVE LIST		
MK	QTY	SIZE	RATING	DESCRIPTION	MATERIAL
1	20	1/2"	6000#	SS NEEDLE VALVE	GAUGETECH
2	6	1/2"	6000#	GTHBB12MFSS MANIFOLD	GAUGETECH NOTE 5
3	6	3"	600 ANSI	RF SWING CHECK VALVE	DHV NACE
4	14	1/2"	2000#	RP BALL VALVE SCREWED	MAS G2 SS
5	7	1"	3000#	RP BALL VALVE SCREWED	WKM NACE
6	1	1/4"	2000#	RP BALL VALVE SCREWED	DHV NACE
7	4	1/2"	6000#	SS GAUGE VALVE	GAUGETECH
8	1	2"	150 ANSI	RP BALL VALVE FLANGED	KUKA STD
9					
10					



MATERIAL LIST		
QTY	TAG #	DESCRIPTION
6	ESD-1001/1011/1021 1031/1041/1051	GVS B2-2500-RTJ-0-04 3" 2500# RTJ FULL PORT BALL VALVE CVS240SR10 SPRING RETURN ACTUATOR. 80 PSI. FAIL CLOSE
6	ZSC-1001/1011/1021 1031/1041/1051 ZSO-1001/1011/1021 1031/1041/1051	CVS CONTROLS 870-M1 LIMIT SWITCH WITH BEACON INDICATOR. OPEN AND CLOSED SWITCH. CSA EXP.
6	PCV-1000/1010/1020 1030/1040/1050	NUVISTA SUPPLIED 3" 2500# RTJ MASTERFLO XP25E ANGLE CHOKE VALVE. INCONEL/TC TRIM. LT VITON SEALS. FISHER 667-70 ACTUATOR
6	I2P-1000/1010/1020 1030/1040/1050	FISHER DVC6200AC POSITIONER. 4-20 mA. 6-30 PSI. FISHER 67 REGULATOR
6	PIT-1003/1013/1023 1033/1043/1053	FOXBORO IGP05S-T521CD-L1(N) PRESSURE TRANSMITTER. LCD DISPLAY.
18	PI-1000/1010/1020 1030/1040/1050 PI-1001/1011/1021 1031/1041/1051 PI-1002/1012/1022 1032/1042/1052	1/2" NPT 0-5000 PSI. DUAL SCALE. LIQUID FILLED. BOTTOM MOUNT. 4" FACE
6	EY-1001/1011/1021 1031/1041/1051	ASCO EFB314G301 SOLENOID VALVE. 24 VDC
6	PY-1001/1011/1021 1031/1041/1051	CVS 4057-CP 3 WAY SWITCH. MANUAL LATCH
6	SV-1001/1011/1021 1031/1041/1051	1/4" NPT REXROTH QUICK EXHAUST VALVE
1	PCV-6000	FISHER 912 REGULATOR. 11" WC
1	PCV-6001	MAXITROL APPLANCE REGULATOR
1	TCV-6000	20,000 BTU TEMPERATURE CONTROLLER
1	PRV-6000	FISHER 289U RELIEF VALVE. 5-25" WC
1	SSDV-6000	ASV375 SAFETY SHUTOFF VALVE
6	PRV-01	CVS 67CFR SWEET SERVICE REGULATOR. 0-125 PSI
1	PI-6000	1/2" NPT 0-200 PSI. DUAL SCALE. LIQUID FILLED. BOTTOM MOUNT. 4" FACE
6	SP-1000/1010/1020 1030/1040/1050	S22-1/2-316-4-SP SAND PROBE. 4" U LENGTH. 0.44" OD. 0.09" WALL THICKNESS
6	PSH-1000/1010/1020 1030/1040/1050	CCS 646GE11-7011 PRESSURE SWITCH. SET @ 689 KPA RISING

NO	REVISION	BY	DATE
0	ISSUED FOR APPROVAL	SM	DEC 5, 25

NOTES:  
 1. ALL 1/2" NPT FUEL GAS BALL VALVES C/W LOCKABLE HANDLES  
 2. INSTRUMENT AIR LINE ENTERS AND EXITS HIGH IN BUILDING.  
 3. HEATER 912 REGULATORS AND 289U RELIEF VALVE VENTED OFF SKID SEPARATELY WITH 3/8" TUBING  
 4. ALL INSTRUMENT AIR SUPPLIED COMPONENTS VENT INSIDE SKID  
 5. MANIFOLDS C/W CAL. PORT. 3/8" TUBE FITTING WITH CAP  
 6. PRESSURE SWITCH MOUNTED TO VALVE WITH SS-810-1-B & SS-8-TA-1-8 TUBE FITTINGS  
 7. VENT ON VALVE BODY  
 8. SUPPLY TWO (2) 1 TON PUSH BEAM TROLLEYS  
 9. SHIP LOOSE 7'-6" WIDE DOOR CANOPY  
 10. SHIP LOOSE GAS DETECTION. M-22-A-A DUAL TRANSMITTER, SC310A-100 LEL SENSOR, ST320A H2S SENSOR, TWO JB'S

NUVISTA ENERGY LTD.  
 05-28-071-09 W6M  
 6" SKID  
 STA 100  
 TUBE SKID  
 TAK JOB# 11456

**APPROVED**

150# ANSI WELDED PIPING SCH 80 A333 W/ A350-LF2 & A420-WPL6 FORGED STEEL FITTINGS, 100% RT, 100% MT, 10% HT, HYDROTEST TO 428 PSI  
 600# ANSI WELDED PIPING SCH 80 A333 W/ A350-LF2 & A420-WPL6 FORGED STEEL FITTINGS, 100% RT, 100% MT, 10% HT, HYDROTEST TO 2220 PSI  
 2500# ANSI WELDED PIPING SCH 80 A333 W/ A350-LF2 & A420-WPL6 FORGED STEEL FITTINGS, 100% RT, 100% MT, PWHT, HYDROTEST TO 7500 PSI  
 STRUCTURAL STEEL SKID (8' W/ 3' CHECKER PLATE FLOOR. 14'-6" X 23' X 8'-6" EAVE GALVALUME PANEL BUILDING.  
 FINISH: POLYURETHANE PAINT WITH 8' LONG RIDGE VENT IN CENTER PORTION OF BUILDING. 4 LOUVERS  
 PIPING THICKNESS: 1/2" / 3000PSI FORGED STEEL FITTINGS. PAINT SHOP PRIMER W/ WARM GRAY FINISH  
 THREADED PIPING PROCEDURE TO FOLLOW TAK QC MANUAL SECTION 18.3 & EXHIBIT 18.1

**TAK**  
 OIL&GAS MANUFACTURING

PIPING & INSTRUMENTATION DIAGRAM

DATE	SCALE
DEC 5, 25	N.T.S.

DRAWN: SM  
 APPROVED FOR CONSTRUCTION: [Signature]  
 DWG NO 11456P&ID  
 SH NO 1 REV 1