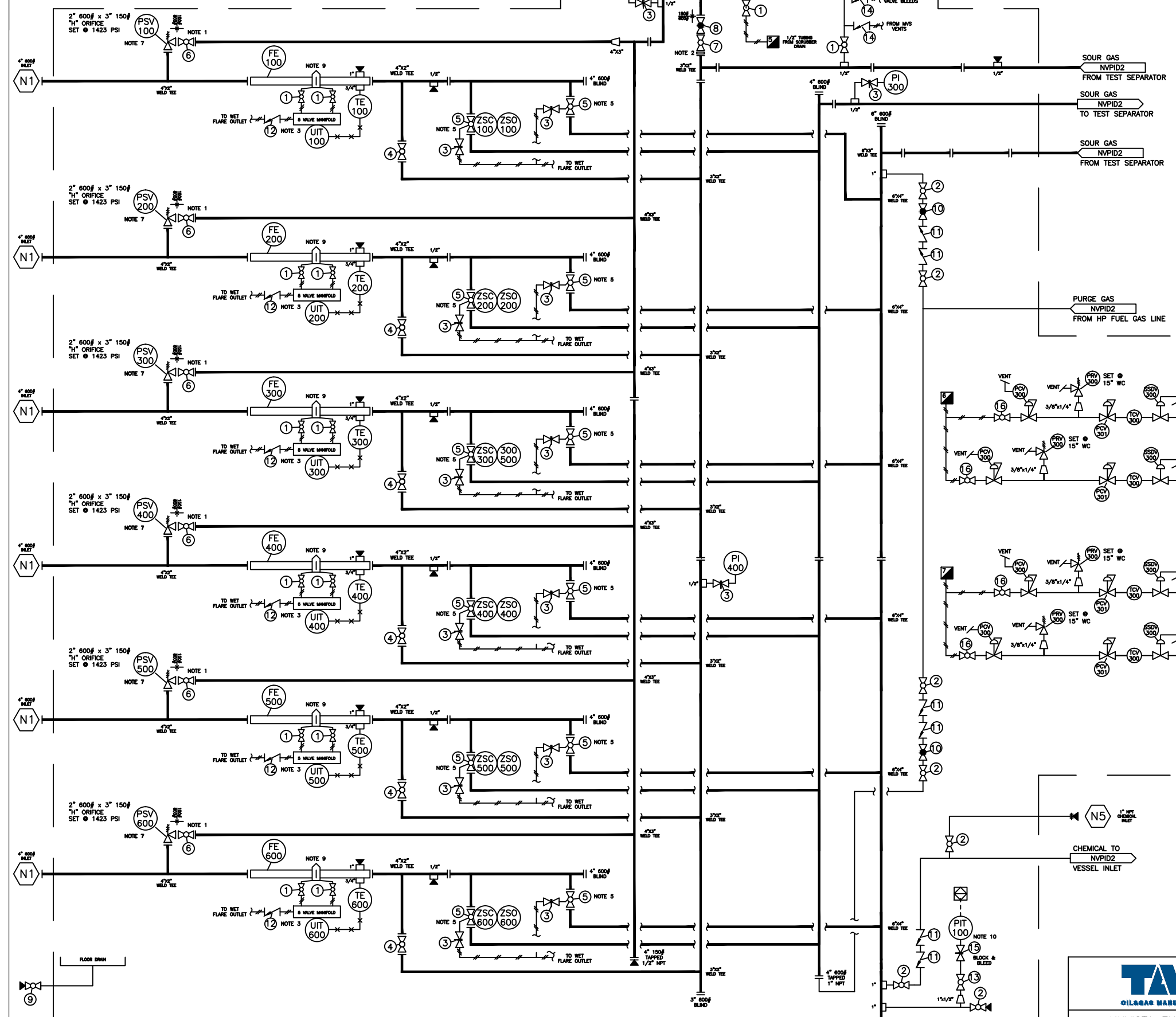


CONNECTION LIST			CONNECTION LIST		
TAG	SIZE	DESCRIPTION	TAG	SIZE	DESCRIPTION
N1	4"	600# RF INLETS	N5	1"	NPT CHEMICAL INLET
N2	4"	150# RF DRY FLARE OUTLET			
N3	6"	600# RF GROUP OUTLET			
N4	3"	150# RF WET FLARE OUTLET			



H-1250/1350/1450/1550 NOTE 6
 CCI THERMAL 24" x 24"
 20,000 BTU/HR CATALYTIC
 12V HEATER C/W 100% SAFETY SHUTOFF
 25' CABLES
 NATURAL GAS ORIFICE

VALVE LIST			DESCRIPTION		MATERIAL	
1	14	1/2"	3000#	FP BALL VALVE SCREWED	WKM	NACE NOTE 8
2	7	1"	3000#	RP BALL VALVE SCREWED	WKM	NACE NOTE 8
3	15	1/2"	6000#	SS NEEDLE VALVE	GAUGETECH	
4	6	2"	600 ANSI	RF FP TRUNNION DBB BV	KUKA	NACE
5	12	4"	600 ANSI	RF FP TRUNNION DBB BV	KUKA	NACE
6	6	3"	150 ANSI	RF FP TRUNNION DBB BV	KUKA	NACE
7	1	3"	600 ANSI	RF FP TRUNNION DIB-1 BV	KUKA	NACE
8	1	3"	600 ANSI	RF GLOBE VALVE. TRIM 12	DHV	NACE
9	1	2"	3000#	RP BALL VALVE SCREWED	WKM	SWEET NOTE 8
10	2	1"	CLASS 800	NPT GLOBE VALVE	DHV	NACE
11	6	1"	3000#	INLINE CHECK VALVE	PLAINSMAN	SS
12	6	3/8"	6000#	VH36B-D-6T-KZ-1-S CHECK	DK-LOK	
13	1	1/2"	3000#	RP BALL VALVE SCREWED	WKM	NACE NOTE 8
14	3	1/2"	3000#	CHECK VALVE SCREWED	PLAINSMAN	SS
15	1	1/2"	6000#	GTHBB12MFSS MANIFOLD	GAUGETECH	
16	4	1/4"	2000#	RP BALL VALVE SCREWED	MERIDIAN	NACE

MATERIAL LIST		
QTY	TAG #	DESCRIPTION
6	FE-100/200 300/400/500/600	4" 600# ANSI JR METER RUN (NACE) C/W FLOW CONDITIONER (AGA-2000) 2.500" BORE ORIFICE PLATE. FLANGED FLOW CONDITIONER
6	PSV-100/200 300/400/500/600	2" 600# x 3" 150# TAYLOR RELIEF VALVE. SET @ 1423 PSI. H ORIFICE. SOUR. MODEL 825H887134543600
6	ZSC/ZSO-100/200 300/400/500/600	CVS CONTROLS 870-M1 LIMIT SWITCH WITH BEACON INDICATOR. OPEN AND CLOSED SWITCH. CSA EXP.
2	PI-100/200	1/2" NPT 0-300 PSI D.S. L.F. B.M. 4" FACE
2	PI-300/400	1/2" NPT 0-1500 PSI D.S. L.F. B.M. 4" FACE
6	UIT-100/200 300/400/500/600	ROSEMOUNT 4088B2P13G4R3E121A6M5 MULTIVARIABLE TRANSMITTER. -250 TO 1000" WC. 3626 PSI MEASUREMENT. RTD INPUT. LCD DISPLAY. 5-WAY MANIFOLD HASTELLOY SENSOR
6	TE-100/200 300/400/500/600	3 WIRE RTD C/W THERMOWELL -100 TO 204 DEG C.
1	PIT-100	FOXBORO IGPO55-TS2F1CD-L1(N) PRESSURE TRANSMITTER. LCD DISPLAY.
4	PCV-300	FISHER 912 REGULATOR. 11" WC
4	PCV-301	MAXITROL REGULATOR
4	TCV-300	20,000 BTU TEMPERATURE CONTROLLER
4	SSDV-300	ASV375 SAFETY SHUTOFF VALVE
4	PRV-300	FISHER 289U RELIEF VALVE. 5-25" WC

150# ANSI WELDED PIPING SCH 80 A333 W/ A350-LF2 & A420-WPL6 FORGED STEEL FITTINGS, 100% RT, 100% MT, PWHT, HYDROTEST TO 428 PSI
 600# ANSI WELDED PIPING SCH 80 A333 W/ A350-LF2 & A420-WPL6 FORGED STEEL FITTINGS, 100% RT, 100% MT, PWHT, HYDROTEST TO 2160 PSI
 PROCESS THREADED PIPING SCH 160 W/ 3000PSI FORGED STEEL FITTINGS THREADED PIPING PROCEDURE TO FOLLOW TAK QC MANUAL SECTION 18.3 & EXHIBIT 18.1
 STRUCTURAL STEEL SKID W/ 3/16" CHECKER PLATE FLOOR, ONE SUMP
 14' X 36' GALVALUME SANDWICH PANEL BUILDING W/ GABLE STYLE ROOF. FULL LENGTH ICE RAKES (2). 12' LONG RIDGE VENT IN CENTER PORTION ONE 36" WIDE DOOR CANOPY. TWO 90" WIDE DOOR CANOPIES
 PAINT SHOP PRIMER W/ WARM GRAY FINISH
 316 SS TUBING W/ SWAGelok STAINLESS STEEL TUBE FITTINGS
 PIPING & INSTRUMENTATION DIAGRAM

NO	REVISION	BY	DATE
0	ISSUED FOR APPROVAL	SM	DEC 5, 25

- NOTES:
 1. T-BAR LEVER OPERATED VALVE WITH CHAIN
 2. 1/2" RESTRICTION ORIFICE
 3. MANIFOLDS INSTALLED AWAY FROM VENTS TO AVOID FREEZING
 4. ALL FP TRUNNION VALVES C/W GREASE CERTS. GREASE CERTS INSTALLED IN BOTTOM OF VALVES. BLEED VALVES INSTALLED ON SIDE OF VALVES
 5. GEAR OPERATED VALVE
 6. SUPPLY LAMACOID TAG WITH HEATER NUMBER
 7. SUPPLY LAMINATED TAG WITH PSV INFO. SHIP PSV DOCUMENTATION WITH PACKAGE
 8. VALVE C/W LOCKABLE HANDLE
 9. TAG METER RUN WITH ORIFICE PLATE SIZE
 10. MANIFOLD C/W CAL PORT. 3/8" TUBE FITTING WITH CAP

APPROVED

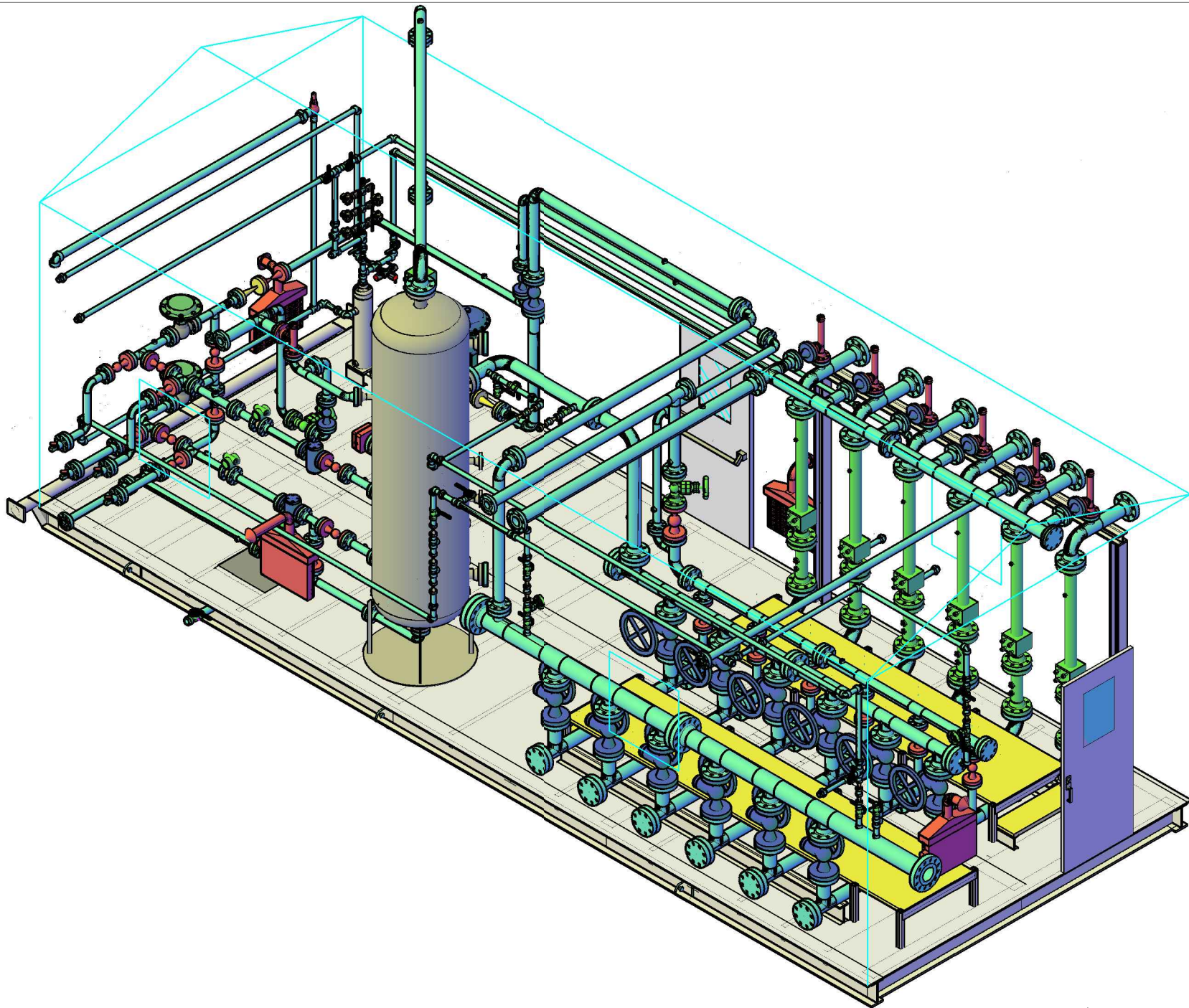


NUVISTA ENERGY LTD.
 05-28-071-09 W6M
 6 WELL SOUR METER SKID
 C/W 36" TEST SEPARATOR
 STANDARD LAYOUT DESIGN

TAK JOB# 11455

DATE	SCALE
12/05/25	N.T.S.

DRAWN	SM	APPROVED FOR CONSTRUCTION	DWG NO	SH NO
			11455P&ID	1



SE ISOMETRIC LAYOUT VIEW

DATE DEC 5, 2025

NUVISTA ENERGY LTD.
 05-28-071-09 W6M
 WELL METER SKID
 W/ 36" TEST SEPARATOR
 STANDARD LAYOUT DESIGN



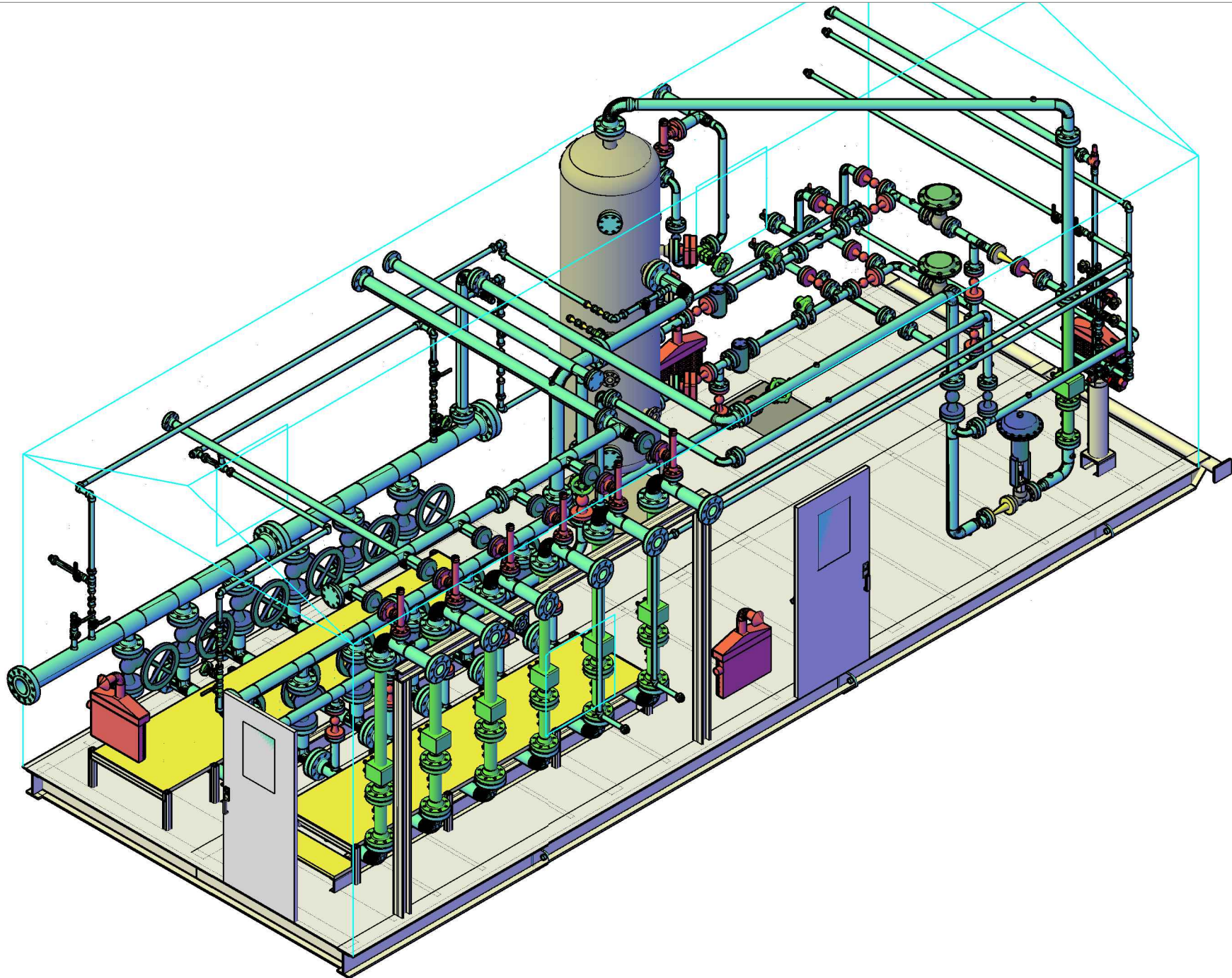
APPROVED

ISSUED FOR APPROVAL	SM	DEC 5, 25
NO	BY	DATE

DRAWN	CHECKED	APPROVED
NO	NO	NO

DATE	REV
NO	NO

TAK JOB# 11455



NE ISOMETRIC LAYOUT VIEW

DATE DEC 5, 2025

NUVISTA ENERGY LTD.
 05-28-071-09 W6M
 WELL METER SKID
 /W 36" TEST SEPARATOR
 STANDARD LAYOUT DESIGN



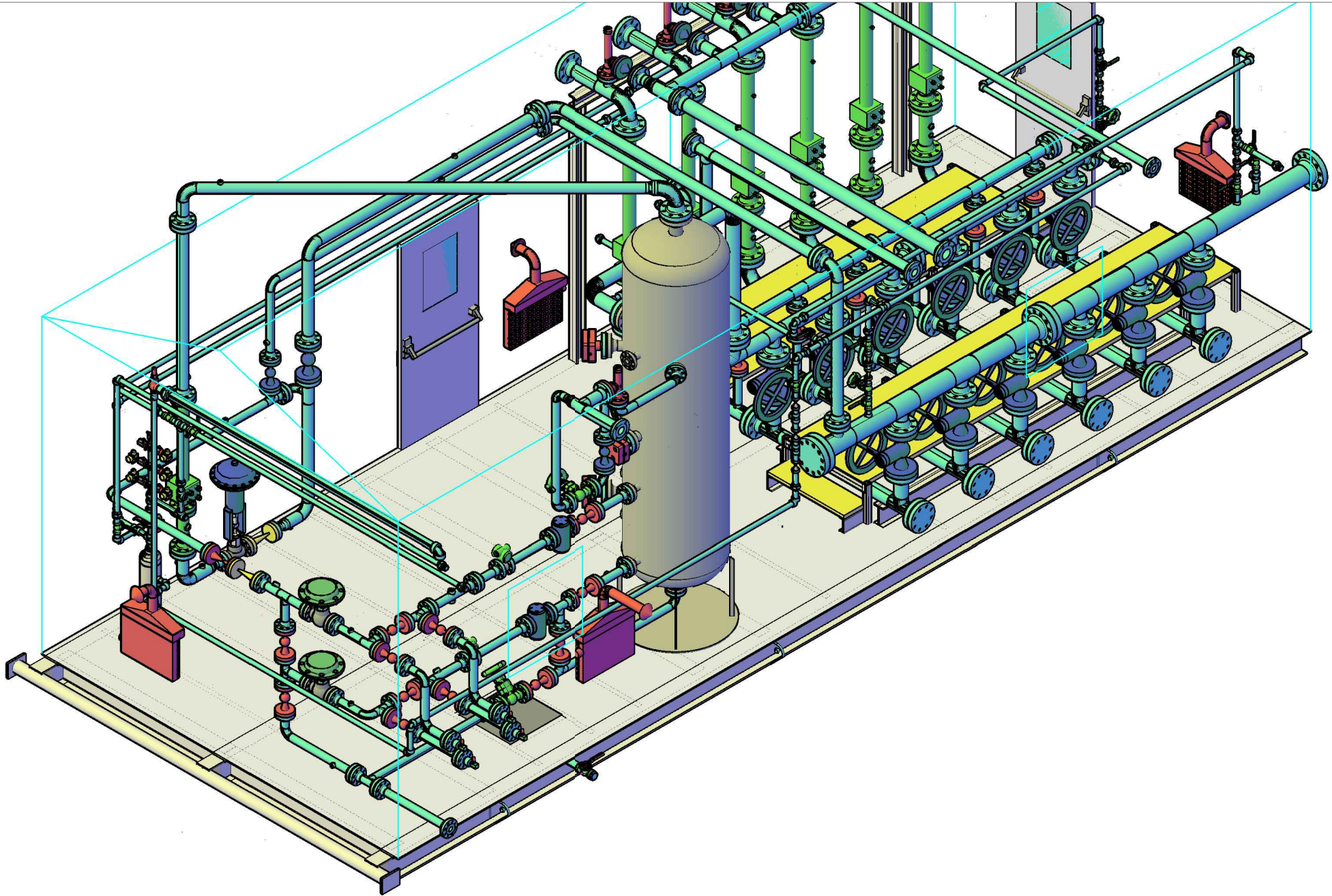
APPROVED

ISSUED FOR APPROVAL	SM	DEC 5, 25
REVISION	BY	DATE

DRAWN	CHECKED	APPROVED
DATE	DATE	DATE
NO	NO	NO

DATE	REV
DEC 5, 2025	1

TAK JOB# 11455



SW ISOMETRIC LAYOUT VIEW

DATE DEC 5, 2025

NUVISTA ENERGY LTD.
 05-28-071-09 W6M
 WELL METER SKID
 /W 36" TEST SEPARATOR
 STANDARD LAYOUT DESIGN



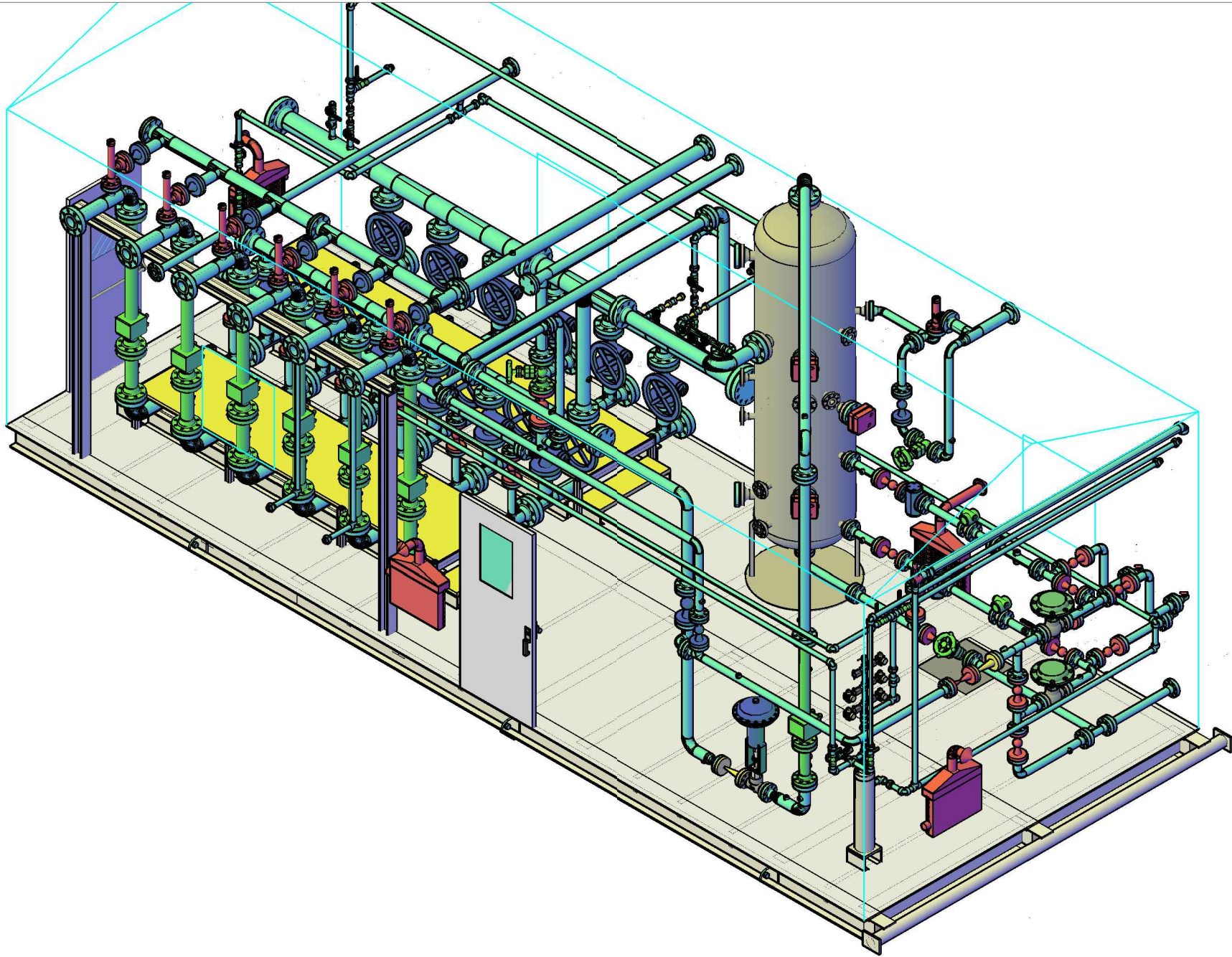
APPROVED

ISSUED FOR APPROVAL	SM	DEC 5, 25
NO	REVISION	BY DATE

DRAWN	CHECKED	APPROVED
DATE	DATE	DATE
NO	REVISION	BY DATE

DATE	DATE	DATE
NO	REVISION	BY DATE

TAK JOB# 11455



NW ISOMETRIC LAYOUT VIEW

DATE DEC 5, 2025

NUVISTA ENERGY LTD.
 05-28-071-09 W6M
 WELL METER SKID
 W/ 36" TEST SEPARATOR
 STANDARD LAYOUT DESIGN

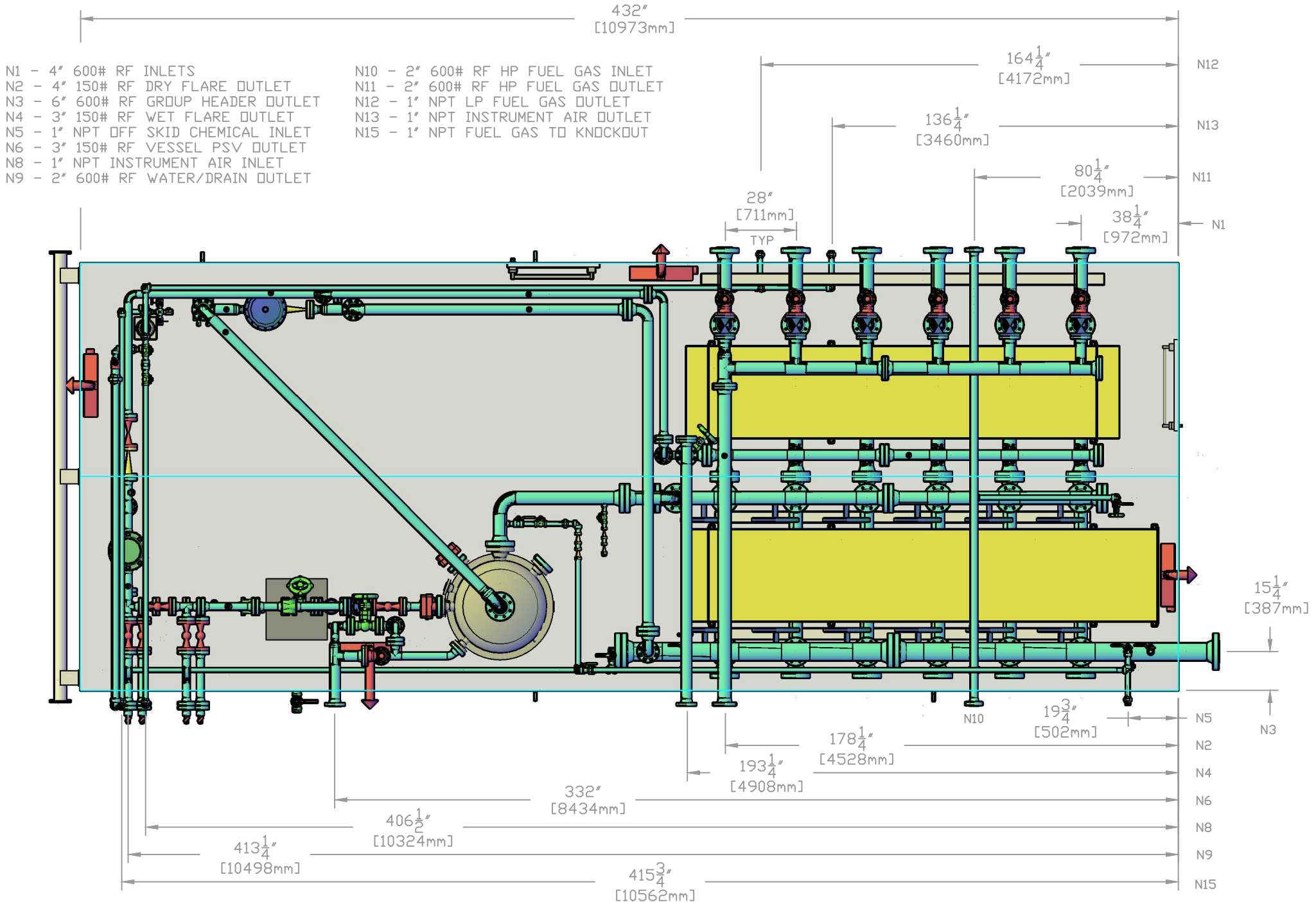


APPROVED

ISSUED FOR APPROVAL	SM	DEC 5, 25
NO	BY	DATE

DRAWN	CHECKED	APPROVED
NO	NO	NO

DATE	REV
NO	NO



TOP LAYOUT VIEW

DATE DEC 5, 2025

NUVISTA ENERGY LTD.
05-28-071-09 W6M
6 WELL METER SKID
1/2" W/36" TEST SEPARATOR
STANDARD LAYOUT DESIGN



APPROVED

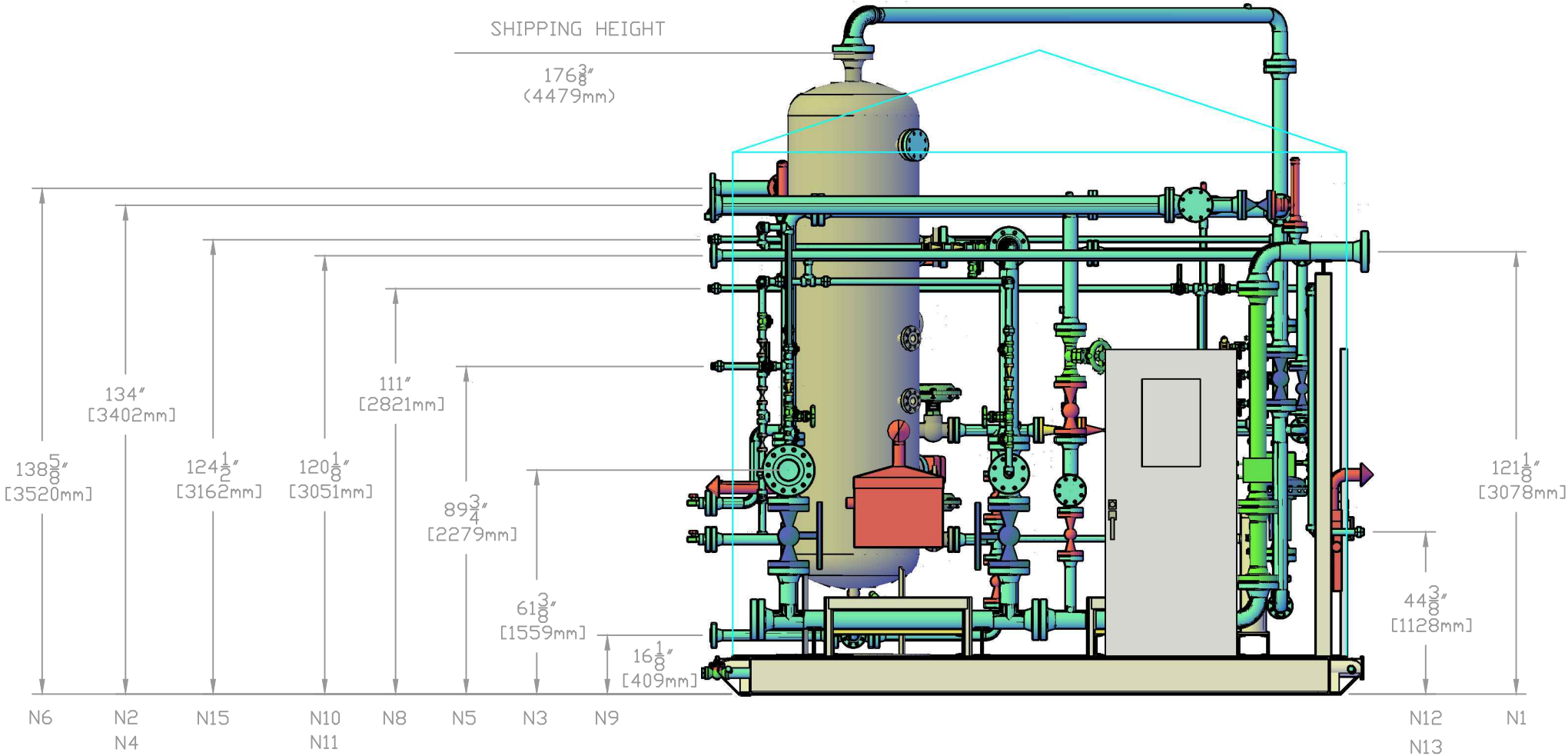
ISSUED FOR APPROVAL	SM	DEC 5, 25
NO	REVISION	BY DATE

DRAWN	CHE	APPROVED
SH NO 1	REV 0	

TAK JOB# 11455

- N1 - 4" 600# RF INLETS
- N2 - 4" 150# RF DRY FLARE OUTLET
- N3 - 6" 600# RF GROUP HEADER OUTLET
- N4 - 3" 150# RF WET FLARE OUTLET
- N5 - 1" NPT OFF SKID CHEMICAL INLET
- N6 - 3" 150# RF VESSEL PSV OUTLET
- N8 - 1" NPT INSTRUMENT AIR INLET
- N9 - 2" 600# RF WATER/DRAIN OUTLET

- N10 - 2" 600# RF HP FUEL GAS INLET
- N11 - 2" 600# RF HP FUEL GAS OUTLET
- N12 - 1" NPT LP FUEL GAS OUTLET
- N13 - 1" NPT INSTRUMENT AIR OUTLET
- N15 - 1" NPT FUEL GAS TO KNOCKOUT



BACK LAYOUT VIEW

DATE DEC 5, 2025

NUVISTA ENERGY LTD.
05-28-071-09 W6M
WELL METER SKID
36" TEST SEPARATOR
STANDARD LAYOUT DESIGN



APPROVED

ISSUED FOR APPROVAL
BY SM
DATE DEC 5, 25

NO REVISION BY DATE

DRAWN BY
CHECKED BY
APPROVED BY

TAK JOB# 11455