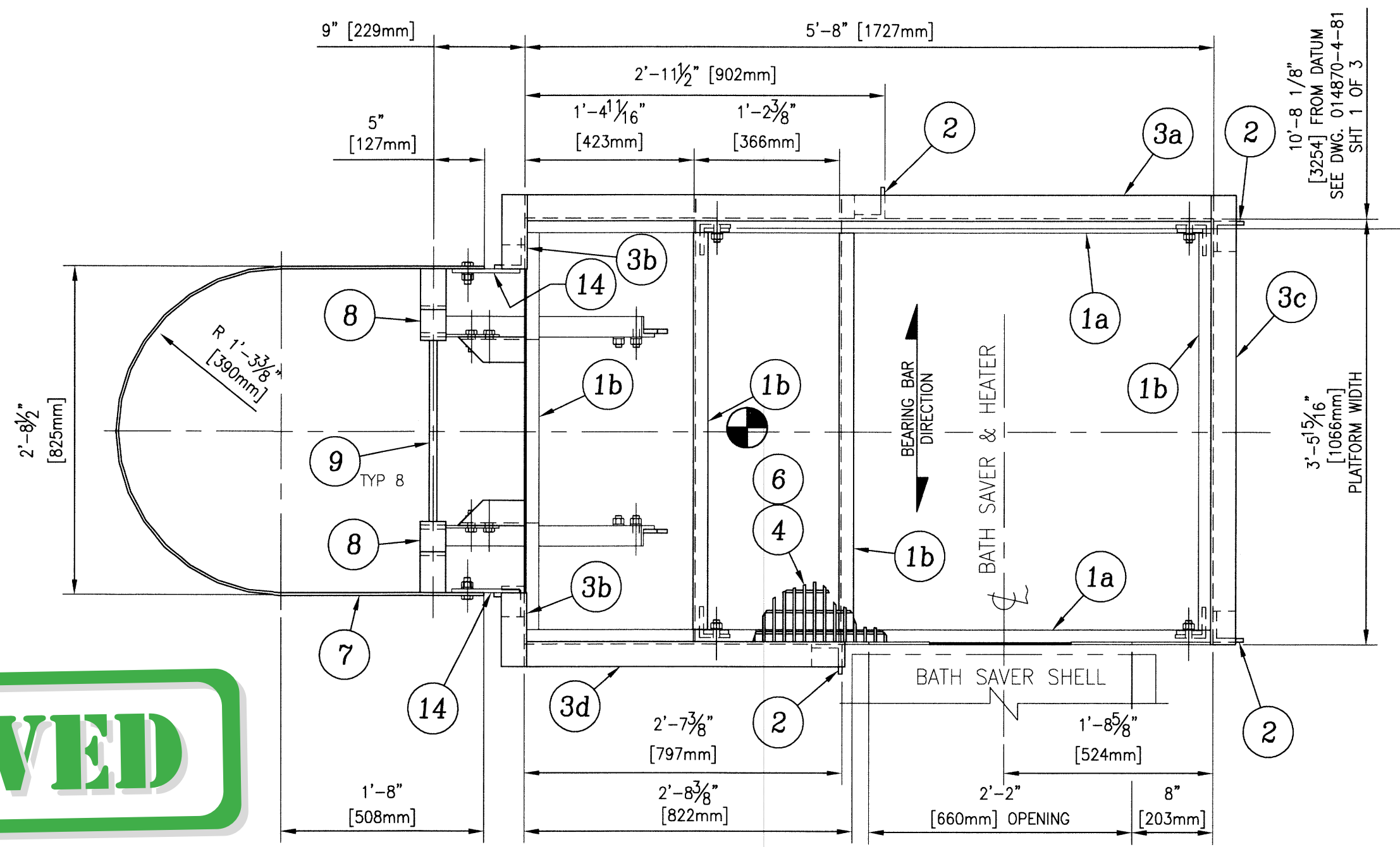
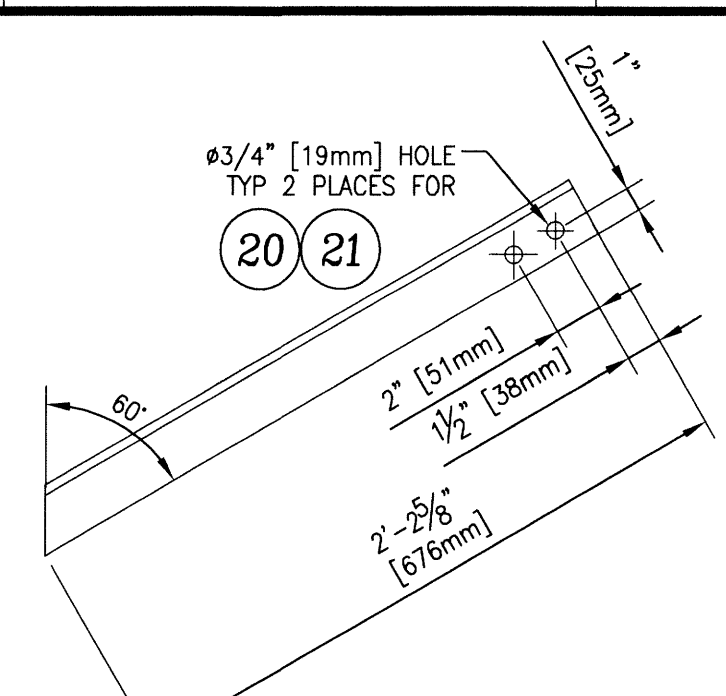


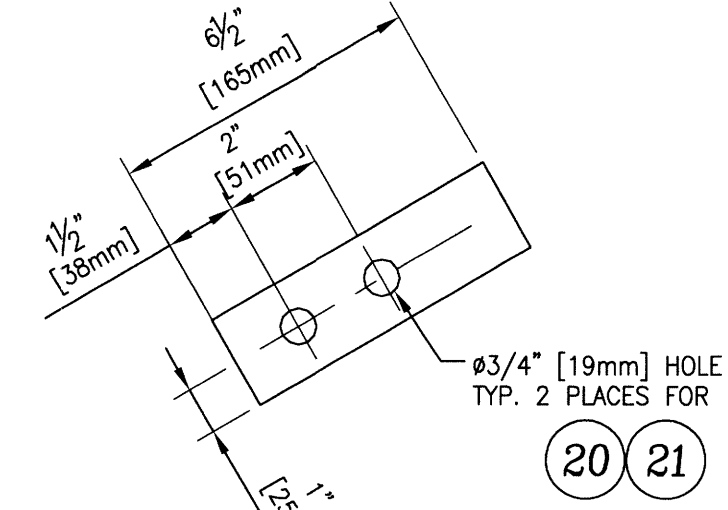
ITEM 17
CLIP "H"
SCALE 3"=1'-0"
(2 REQ'D AS SHOWN)



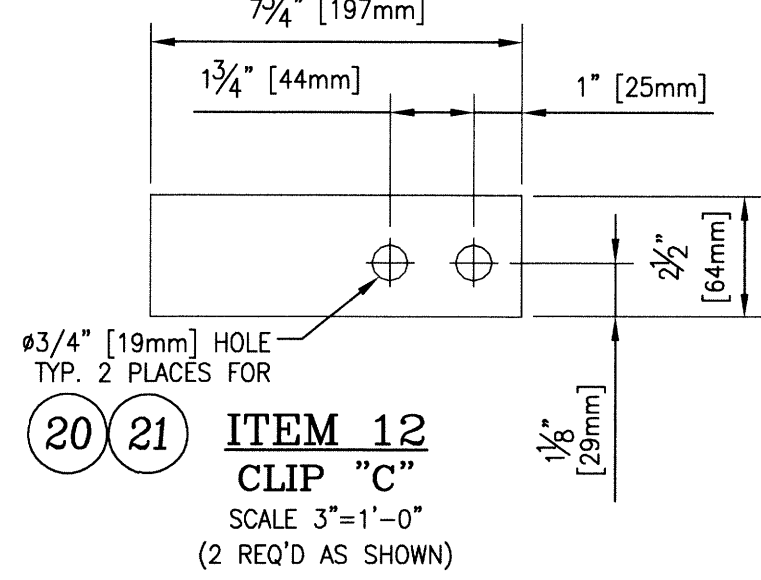
RIGHT SIDE VIEW
SCALE 1"=1'-0"



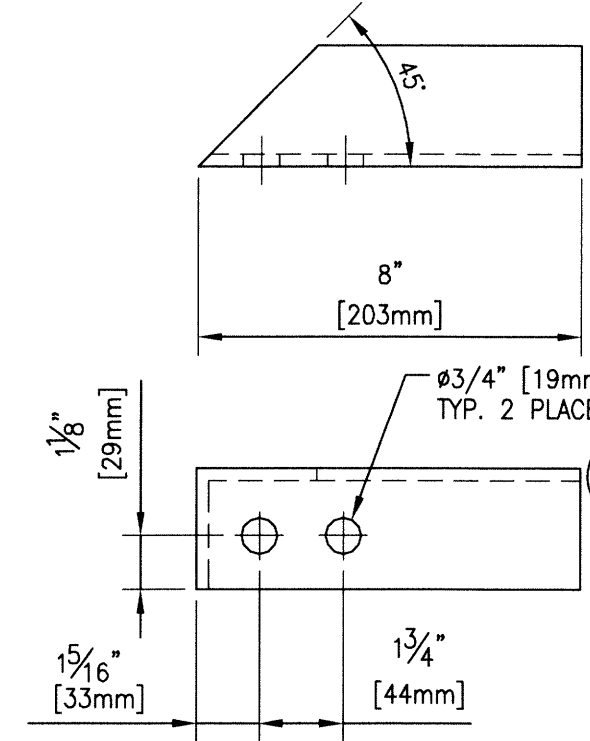
ITEM 10
CLIP "A"
SCALE 1 1/2"=1'-0"
(1 REQ'D AS SHOWN,
1 REQ'D OPPOSITE HAND)



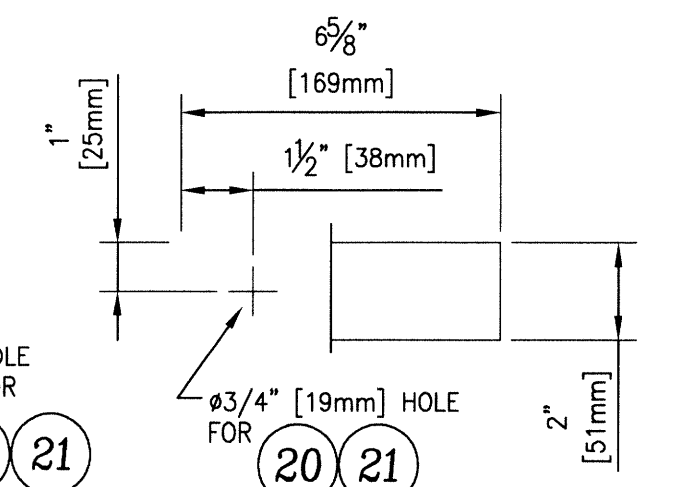
ITEM 11
CLIP "3"
SCALE 3"=1'-0"
(2 REQ'D AS SHOWN)



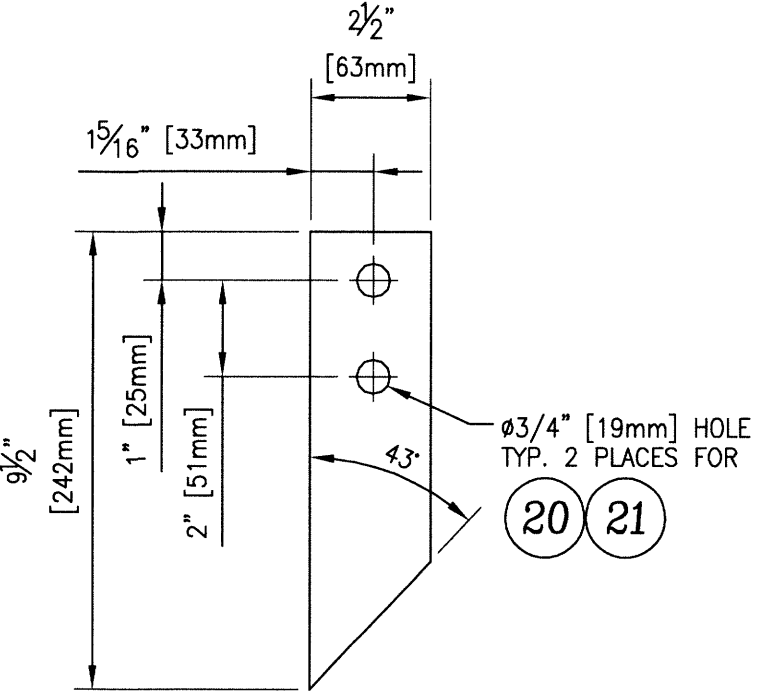
ITEM 12
CLIP "C"
SCALE 3"=1'-0"
(2 REQ'D AS SHOWN)



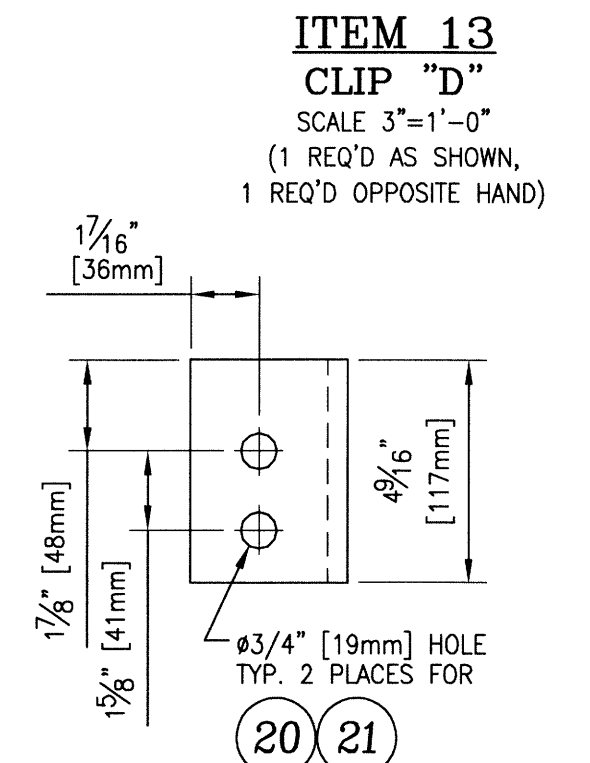
ITEM 13
CLIP "D"
SCALE 3"=1'-0"
(1 REQ'D AS SHOWN,
1 REQ'D OPPOSITE HAND)



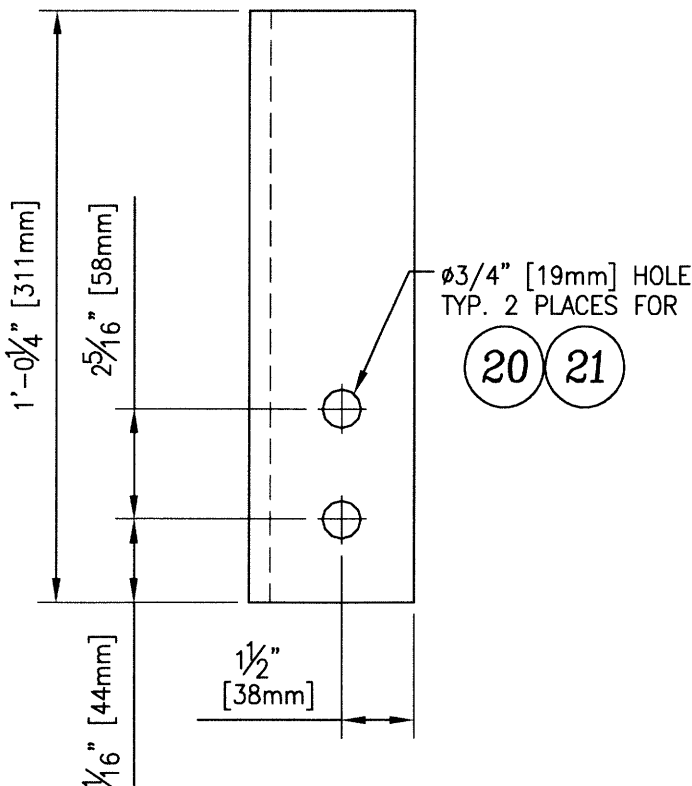
ITEM 14
CLIP "E"
SCALE 3"=1'-0"
(2 REQ'D AS SHOWN)



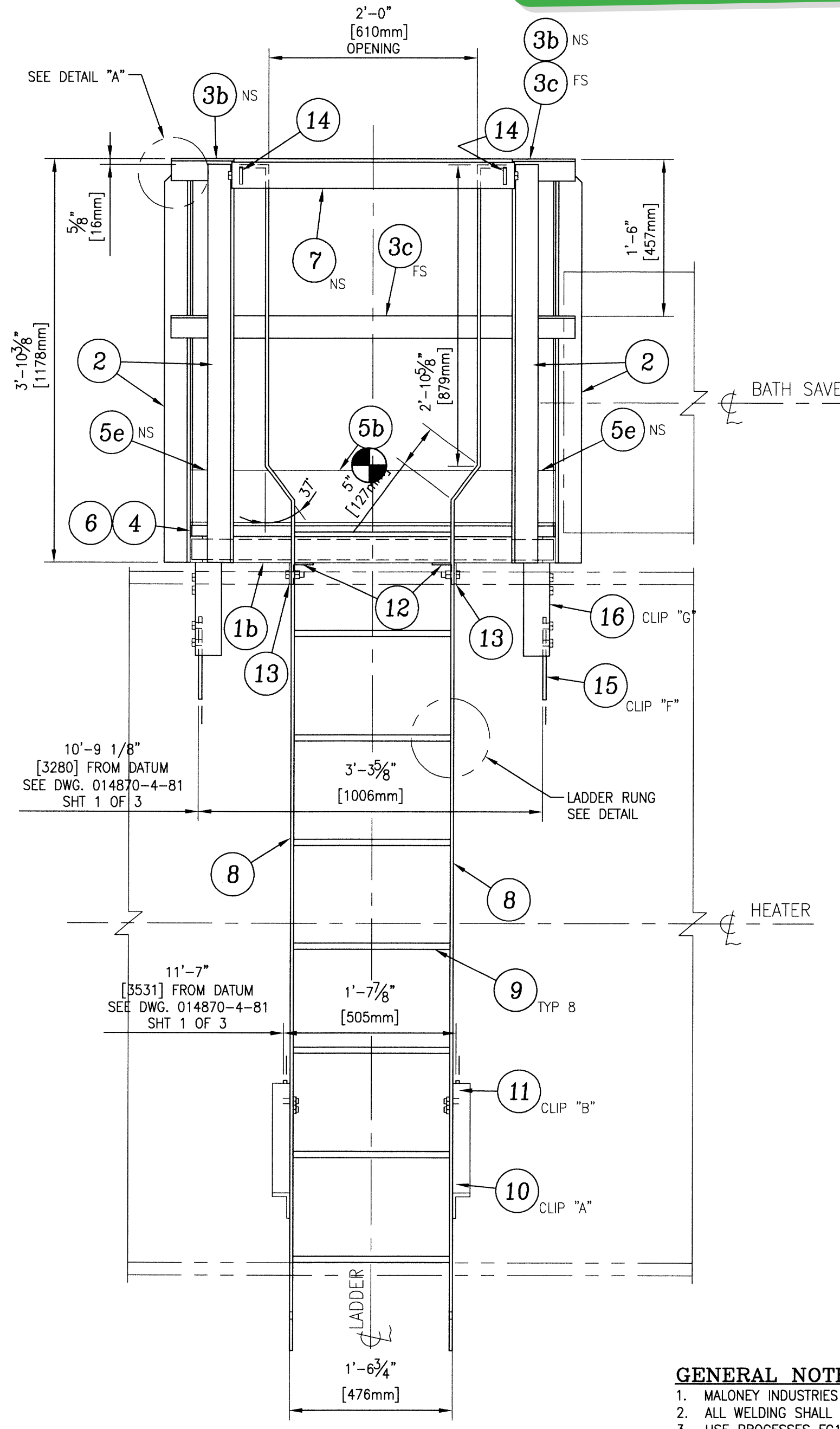
ITEM 15
CLIP "F"
SCALE 3"=1'-0"
(2 REQ'D AS SHOWN)



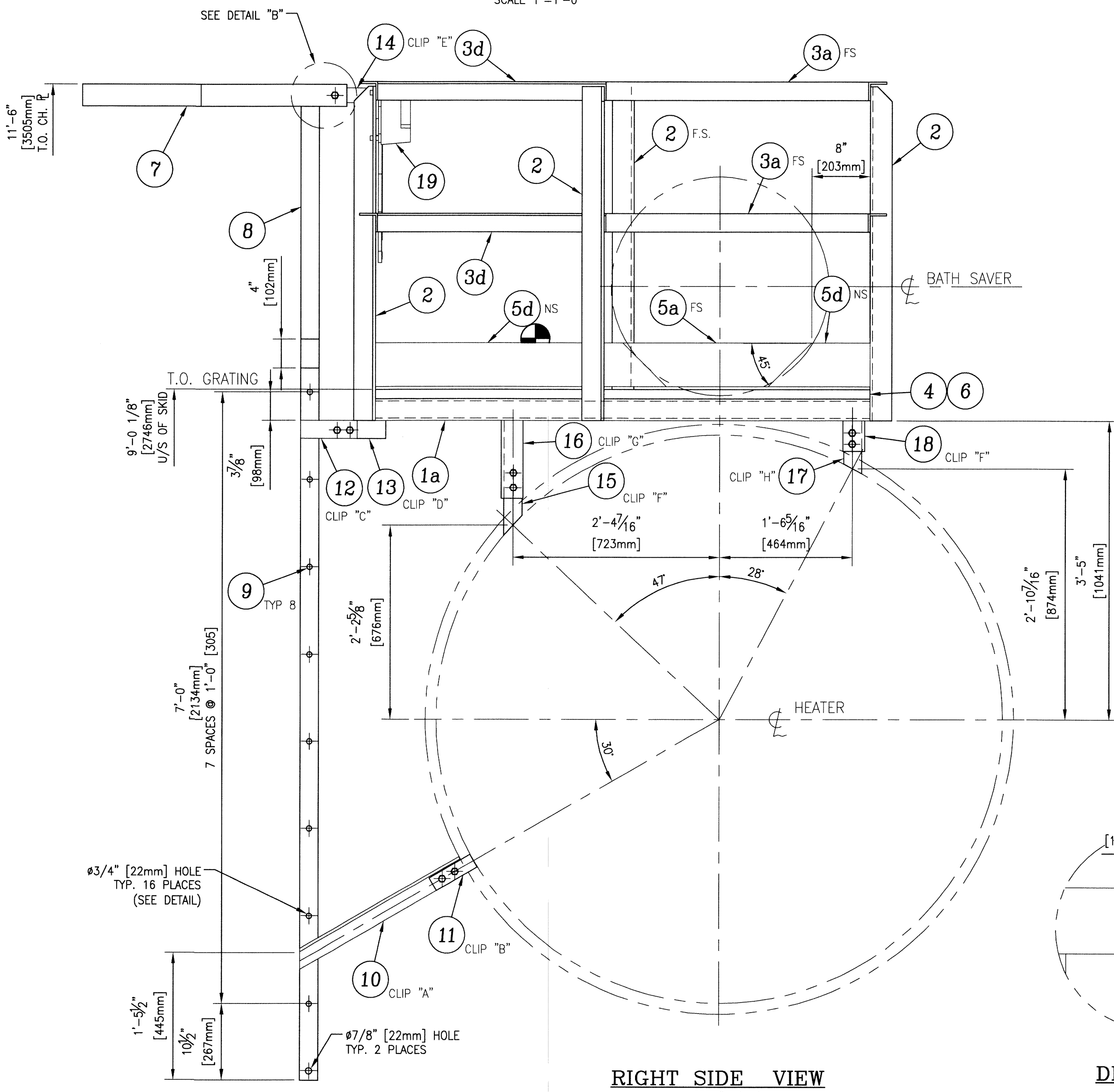
ITEM 18
CLIP "J"
SCALE 3"=1'-0"
(1 REQ'D AS SHOWN,
1 REQ'D OPPOSITE HAND
SHOP TRIM FOR INSULATION)



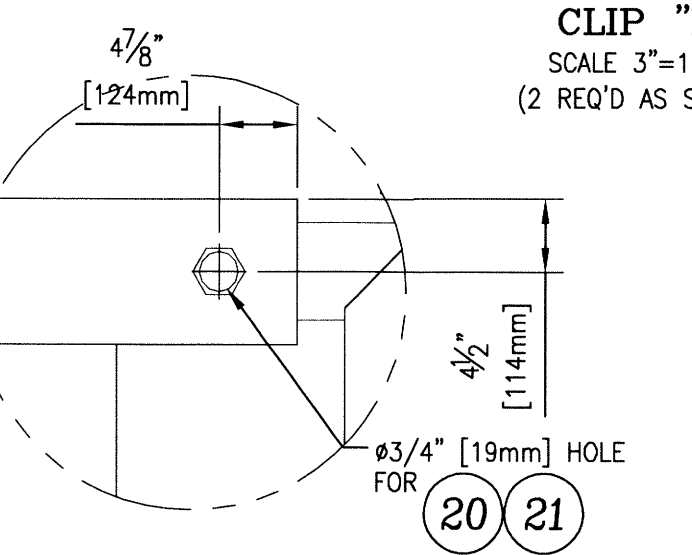
ITEM 16
CLIP "G"
SCALE 3"=1'-0"
(1 REQ'D AS SHOWN,
1 REQ'D OPPOSITE HAND
SHOP TRIM FOR INSULATION)



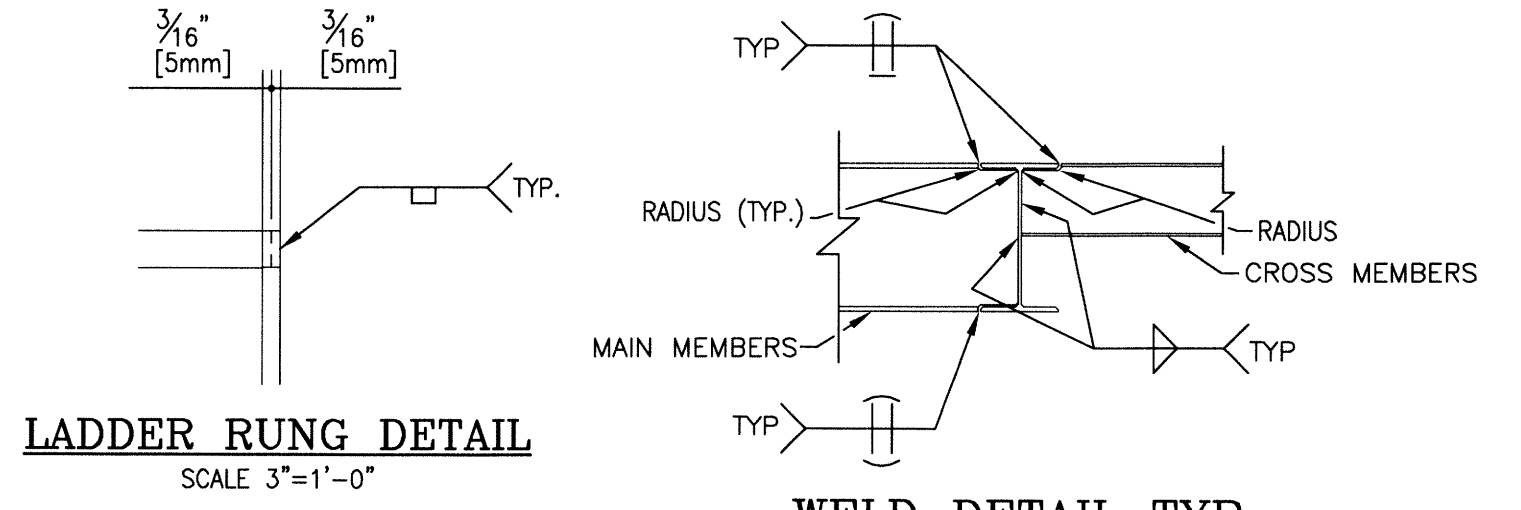
ELEVATION VIEW
SCALE 1"=1'-0"



RIGHT SIDE VIEW
SCALE 1"=1'-0"



DETAIL "B"
SCALE 3"=1'-0"



LADDER RUNG DETAIL
SCALE 3"=1'-0"

WELD DETAIL TYP.
N.T.S.

BILL OF MATERIALS											
M- MTR REQ'D		C- RESTRICTED CHEMISTRY		O- RESTRICTED ORIGIN		N- NACE REQ'D		S- RESTRICTED SUPPLIER		I- IMPACT TEST REQ'D	
ITEM	QTY.	DESCRIPTION	LENGTH	MATERIAL REQ.							
1	LIN	C3x4.1 (PLATFORM)	SA-36/G40.21-300W	21'-7 3/8"±							
1a	2			5'-8"							
1b	4			3'-5 1/8"							
2	6	ANGLE 3" x 3" x 3/8" (POSTS)	SA-36/G40.21/300W	3'-9 3/4"							
3	LIN	ANGLE 2 1/2" x 2 1/2" x 1/4" (HANDRAIL/MIDRAIL)	SA-36/G40.21/300W	27'-10 13/16"±							
3a	2			6'-0 1/2"							
3b	4			7 7/8"							
3c	2			3'-8 1/4"							
3d	2			2'-7 5/8"							
4	LIN	FLAT BAR 1 1/4" x 3/16" THK (GRATING BANDING)	SA-36/G40.21/300W	18'-3 1/4"±							
5	LIN	FLAT BAR 6" x 1/4" THK	SA-36/G40.21/300W	14'-6 1/4"							
5a	1			5'-8"							
5b	1			3'-5 1/2"							
5c	1			1'-2"							
5d	1			3'-4"							
5e	2			5 3/8"							
6	FT²	GRATING SERRATED 1 1/4" THK X 3/16" BEARING BAR W19-4	CS	19.6							
7	1	FLAT BAR 2" x 1/4" THK (LADDER HOOP)	SA-36/G40.21/300W	7'-4 5/16"							
8	2	FLAT BAR 2 1/2" x 3/8" THK (LADDER RAILS)	SA-36/G40.21/300W	11'-5 3/4"							
9	8	ROUND BAR 3/4" Ø (LADDER RUNGS)	SA-36/G40.21/300W	1'-6 3/8"							
10	2	ANGLE 2 1/2" x 2 1/2" x 3/8" THK (CLIP "A")	SA-36/G40.21/300W	2'-2 5/8"							
11	2	FLAT BAR 2" X 3/8" THK (CLIP "B")	SA-36/G40.21/300W	6 1/2"							
12	2	FLAT BAR 2 1/2" x 1/4" THK (CLIP "C")	SA-36/G40.21/300W	7 3/4"							
13	2	ANGLE 2 1/2" x 2 1/2" x 1/4" THK (CLIP "D")	SA-36/G40.21/300W	7 3/4"							
14	2	FLAT BAR 2" x 3/8" THK (CLIP "E")	SA-36/G40.21/300W	6 5/8"							
15	2	FLAT BAR 2 1/2" x 3/8" THK (CLIP "F")	SA-36/G40.21/300W	9 1/2"							
16	2	ANGLE 3" x 3" x 3/8" THK (CLIP "G")	SA-36/G40.21/300W	1'-0 1/4"							
17	2	FLAT BAR 2 1/2" x 3/8" THK (CLIP "H")	SA-36/G40.21/300W	6 13/16"							
18	2	ANGLE 3" x 3" x 3/8" THK (CLIP "J")	SA-36/G40.21/300W	5"							
19	1	INTREPID DOUBLE BAR SAFETY GATE DG32R									
20	30	HEX BOLT 3/4"	GR. 5	1 3/4"							
21	30	HEX NUT 3/4"	GR. 5								

- GENERAL NOTES:**
- MALONEY INDUSTRIES IS CERTIFIED IN ACCORDANCE WITH CSA W47.1.
 - ALL WELDING SHALL MEET THE REQUIREMENTS OF CSA W59.
 - USE PROCESSES FC1 & GM1.
 - DE-BURR ALL CUT EDGES & CORNERS NOT TO BE WELDED.
 - ALL WELDS ARE TO BE 1/4" [6 mm] CONTINUOUS FILLET WELDS UNLESS OTHERWISE NOTED.
 - ALL MAIN MEMBERS TO BE FLUSH WITH T.O.S. UNLESS OTHERWISE NOTED.
 - ALL GRATING TO BE HOT DIPPED GALVANIZED.
 - ALL GRATING IS TO BE PLACED ON T.O.S.
 - ALL CUT EDGES OF GRATING TO BE Banded.
 - SKID/PLATFORM WEIGHT: (INCLUDES HANDRAILS, LADDER & GRATING)
866 lb [401 kg]

REV	DESCRIPTION	DATE	BY	CHK	APP	ADMIN
0	ISSUED FOR CONSTRUCTION	08-08-05	KHH	PAT	AN	
A	ISSUED FOR APPROVAL	08-04-23	KHH	PAT	AN	

THIS DRAWING IS THE PROPERTY OF MALONEY INDUSTRIES AND IS NOT TO BE USED FOR ANY PURPOSE OTHER THAN THAT FOR WHICH IT IS SPECIFICALLY FURNISHED.

MALONEY INDUSTRIES
A DIVISION OF FOREMOST UNIVERSAL LP
8825 Shepard Road SE, Calgary, Alberta, T2C 4N9
Phone: (403) 279-5000 Fax: (403) 279-2068

CUSTOMER		Z-4000 LINE HEATER PACKAGE			
TITLE		BATHTSAVER LADDER & PLATFORM			
PROJECT # AND NAME		BC0127-004 - HORSESHOE - WELLSITE			
DRAWN	DATE	APPROVED	SCALE	WIP NO.	
KHH	08-06-24	[Signature]	AS SHOWN	015940-72	
NO. REQ'D	DRAWING NO.			SHT. NO.	REV.
1	015940-4-72			1 of 1	0